

# TRANSMISSION LINE CORRIDOR RESTRICTIONS

Contact LES before making changes within a transmission corridor.



## Safety & Reliability

Transmission corridors connect the high-voltage power grid and are subject to right-of-way easement restrictions. Items and activities within the corridor are restricted to ensure public safety, maintain reliability and provide ready access to LES crews. Vegetation and man-made obstructions are hazardous when located too close to lines. In addition, construction activities and the use of large equipment within the corridor increases the risk for transmission line contact, causing property damage, and possibly injury or even death. Always be aware of your surroundings and contact LES for additional information and guidance.

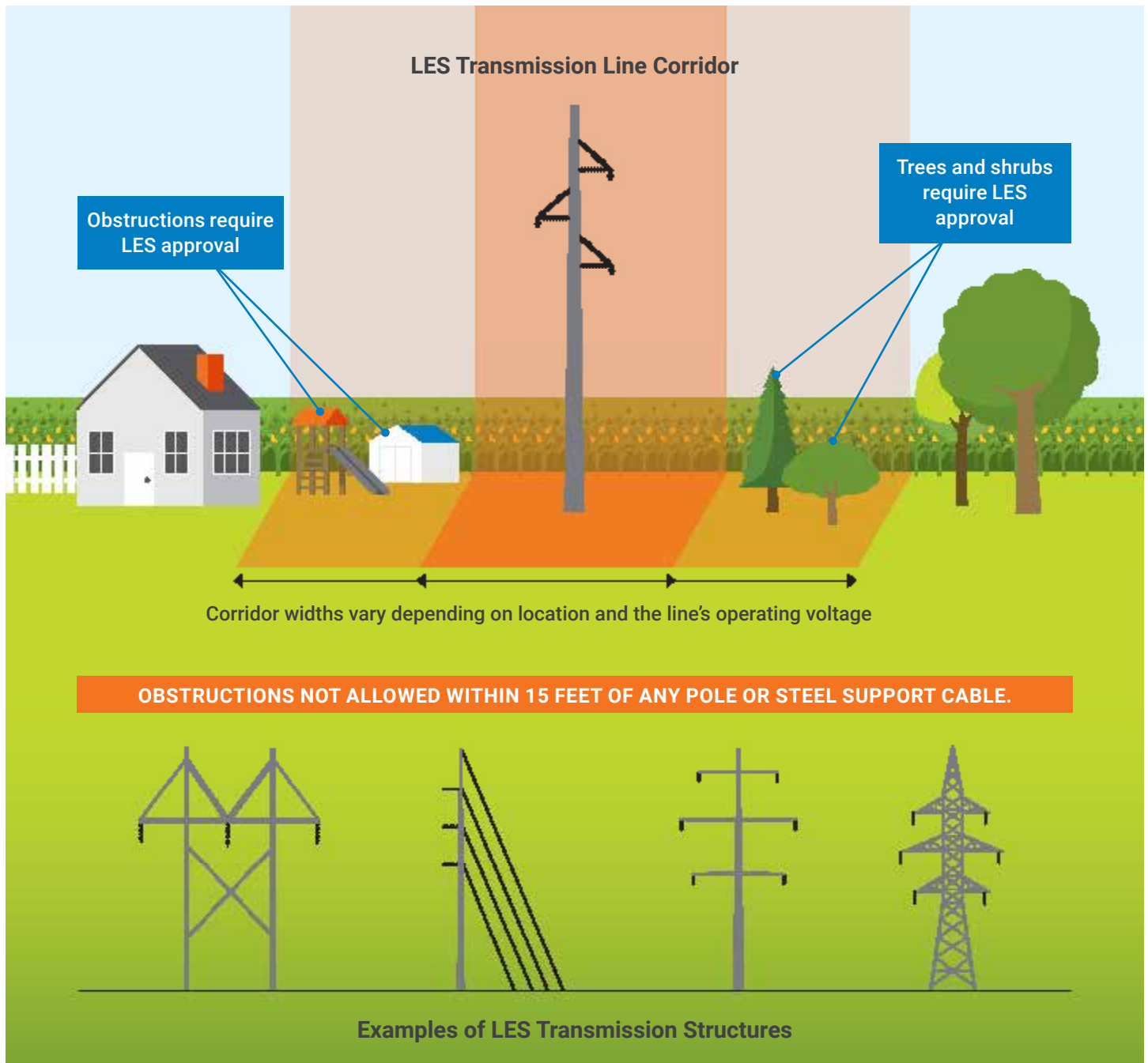


## Vegetation

Grasses, row crops and low-growing vegetation are allowed in all LES transmission corridors. However, LES must place significant restrictions on trees and shrubs to ensure public safety and maintain reliability of the power grid. In some corridors, trees and shrubs with a 15' max height are allowed if placed in LES-approved locations not restricting access to the line. Trees and shrubs not approved by LES are subject to removal.

## Access & Obstructions

LES patrols transmission lines in the spring and fall to identify safety hazards, line maintenance needs and obstructions. These include vegetation, structures, swimming pools, lagoons, ponds, grade changes, billboards, poles, antennas, bulk materials, hay bales, large equipment, combustible materials and anything else that may endanger, impede access or interfere with LES' operations. LES reserves the right to remove fencing if necessary to maintain the transmission line.



If you have any questions or concerns, contact LES Land Management at **402.475.4211** or visit [LES.com/Safety](https://www.les.com/Safety).